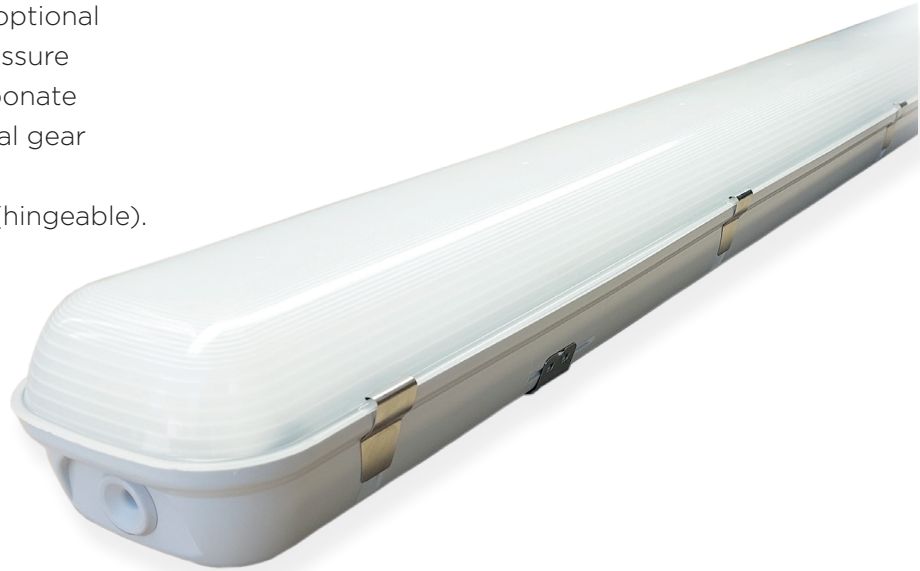


Xsara LED

Housing made of glass fiber polycarbonate (optional reinforced polyester, moulded under high pressure (GRP, PE), injected diffuser made of polycarbonate matt OPAL without glare. White painted metal gear with a retaining clip for easy maintenance.
Clips: stainless steel clips or polyamide clips (hingeable).



Key features

- Screwless installation
- Lumen packages 1280 - 11061 lumens
- Efficiency up to 91%
- Dimming 1-100% (optional)
- Temperature protection as per EN 61347-2-13 C5e
- Overload, short-circuit protection
- Surge protection 1kV
- Luminaire insulation class 1 (class 2 optional)
- 5 year guarantee

Applications

- Production facilities
- Parking garages
- Warehouse
- Damp or wet locations
- Food processing plants

Accessories



Simple suspension
Suspension standard
maximum length 1,5m.



Stainless steel susp. bracket



Quick connection gland



SmartSWITCH HF 5DPf
For automatic on/off switching of luminaires with electronic ballasts and LED drivers.
Bright-out function: luminaire is not switched on if there is adequate brightness.
Delay time, detection range and light value for the bright-out function can be set via 9 dip switches.



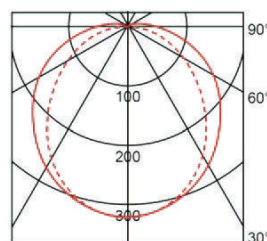
BasicDIM Wireless moduleG2
Wireless controllable with an Android / iOS smart device.
Forms automatically a wireless communication network with up to 250 nodes.

Model No.	XSARA LED 11809	XSARA LED 13621	XSARA LED 15835	XSARA LED 21817	XSARA LED 23641	XSARA LED 25861
Power Consumption (±5%)	9	22	38	18	45	64
Luminous Flux	1216lm	2885lm	4699lm	2432lm	5771lm	8312lm
Luminous Efficacy	145lm/W	141lm/W	135lm/W	145lm/W	141lm/W	138lm/W
Input Voltage	198-264 VAC / 176-280 VDC 0/50/60 Hz					
Power Factor	0.98					
Surge Protection	1kV					
Driver Type	Tridonic					
Control	DALI, basicDIM Wireless (optional)					

Optic Information

LED Type	SMD LED
Efficacy	up to 203lm/W @200mA
Correlated Color Temperature	4000 K (optional 3000K and 6500K)
Color Rendering Index	Ra80
McAdams	3

Photometry



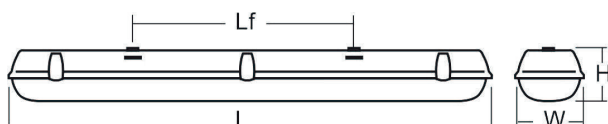
Dimensions and Mounting

Mounting Option	Surface mounted or suspended
Material	polycarbonate - PC (Optional-glass reinforced Polyester compression moulded)
Fixture Color	Gray
IK Rating	IK10
IP Rating	IP66

Lifespan and Warranty

Operating Temperature	-15° C - +40°C
Lifetime of LED modules	>72.000hrs, L80F10
Lifetime of LED driver	>100.000hrs
Warranty	5 Years

Dimensions



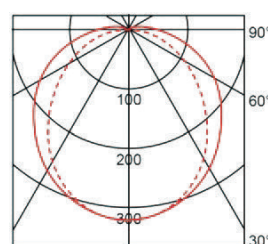
Type	L (mm)	W (mm)	H (mm)	Lf (mm)	No. of Clips	Weight
XSARA118XX	665	84	98,5	400	6	1,5
XSARA136XX	1275	84	98,5	800	8	1,8
XSARA158XX	1575	84	98,5	1100	10	2,2
XSARA218XX	665	134	98,5	400	6	2
XSARA236XX	1275	134	98,5	800	8	2,9
XSARA258XX	1575	134	98,5	1100	10	3,8

Model No.	Xsara11808	Xsara13620	Xsara15833	Xsara21815	Xsara23640	Xsara25851
Power Consumption (±5%)	9	22	37	17	45	56
Luminous Flux	1266lm	3235lm	5468lm	2532lm	6470lm	8088lm
Luminous Efficacy	163lm/W	160lm/W	166lm/W	163lm/W	160lm/W	160lm/W
Input Voltage	198-264 VAC / 176-280 VDC 0/50/60 Hz					
Power Factor	0.98					
Surge Protection	1kV					
Driver Type	Tridonic					
Control	DALI, basicDIM Wireless (optional)					

Optic Information

LED Type	SMD LED
Efficacy	up to 203lm/W @2 00mA
Correlated Color Temperature	4000 K (optional 3000K and 6500K)
Color Rendering Index	Ra80
McAdams	3

Photometry



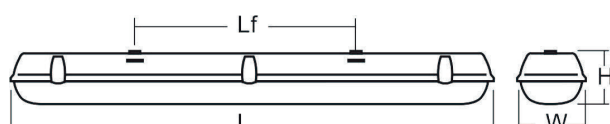
Dimensions and Mounting

Mounting Option	Surface mounted or suspended
Material	polycarbonate - PC (Optional-glass reinforced Polyester compression moulded)
Fixture Color	Gray
IK Rating	IK10
IP Rating	IP66

Lifespan and Warranty

Operating Temperature	-15° C - +40°C
Lifetime of LED modules	>72.000hrs, L80F10
Lifetime of LED driver	>100.000hrs
Warranty	5 Years (conditions at www.ett-lighting.com)

Dimensions



Type	L (mm)	W (mm)	H (mm)	Lf (mm)	No. of Clips	Weight
XSARA118XX	665	84	98,5	400	6	1,5
XSARA136XX	1275	84	98,5	800	8	1,8
XSARA158XX	1575	84	98,5	1100	10	2,2
XSARA218XX	665	134	98,5	400	6	2
XSARA236XX	1275	134	98,5	800	8	2,9
XSARA258XX	1575	134	98,5	1100	10	3,8