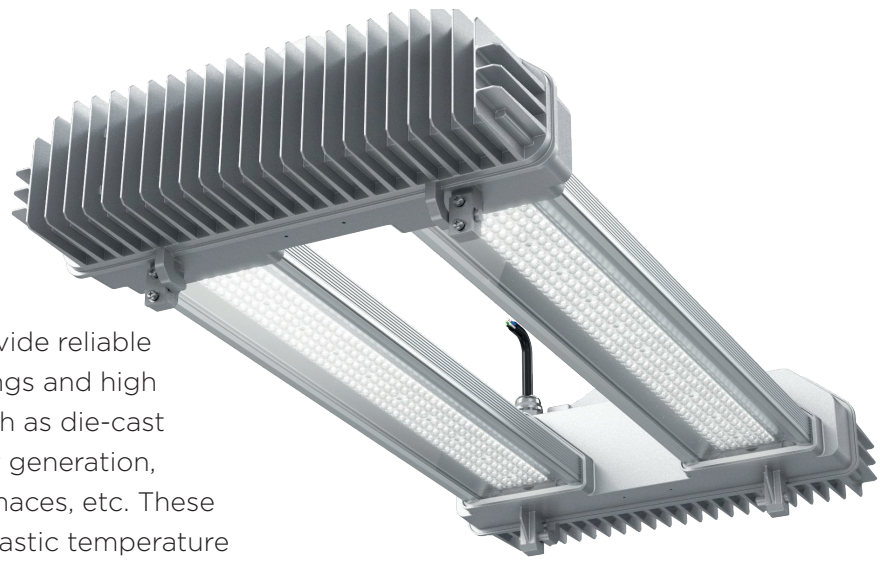


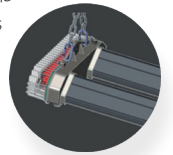
Stark



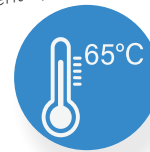
The STARK Series is designed specifically to provide reliable illumination in industrial locations with high ceilings and high ambient operating temperatures up to 65°C, such as die-cast facilities, foundries, iron forges, steel mills, power generation, chemical plants, pulp and paper plants, blast furnaces, etc. These type of industrial applications often experience drastic temperature fluctuations and require an industrial lighting solution with extremely high operating temperatures.

STARKE's superior thermal management system ensures consistent light levels and exceptional efficacy of 160 lm/W in hot environments. The fixture is IP66 rated and can withstand wash downs and protect against the ingress of dust, oil and other non-corrosive materials.

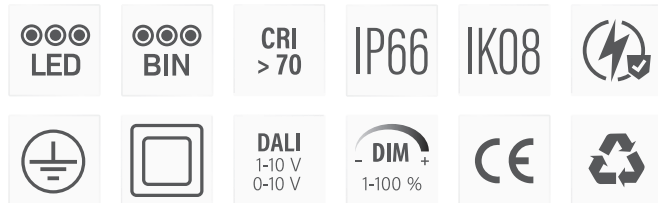
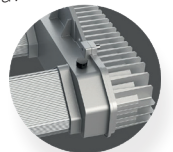
LED driver is installed separately from the chips



High ambient operating temperature



Respirator, avoiding moisture



Tempered glass protect PC lens from oil accumulation, which ensures high intensity of LED system, and withstand wash downs, easy to clean.

Key features

- High Energy Efficiency 160lm/W
- Universal voltage 120-277V
- IP66 Rating
- 0-10V dimming standard
- Beam Angle 30°/45°/60°/90° for options
- Operating temperature: -30°C to + 65°C
- Triangle heat sink for excellent heat dissipation and dust-proof
- Clamshell driver compartment for easy maintenance
- Versatile suspend mounting
- 5 years warranty

Applications

- Heavy manufacturing plants
- Toll station
- Steelworks
- Refinery
- Hangers
- Exhibition center
- Gymnasium

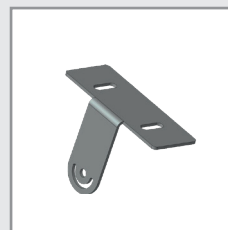
Accessories



Optic lens
High transmittance PC materials, UV test approval.
Code: please refer to Photometry.



Safety chain
304 stainless steel, available for 0.5m long.



Adjustable ceiling mount bracket
SPCC materials with outdoor powder coating.

Technical Data @5000K

Model No.	STARK-200/T	STARK-400/T
Power Consumption (±5%)	200W	400W
Input Voltage	120-277 V/347-480VAC, 50 / 60 Hz	
Power Factor	>0.95	
Surge Protection	6kV line-line, 10kV line-earth	
Control	0-10V dimmable	

Optic Information

LED Type	LED 3030	
Luminous Flux (±10%)	32000lm	64000lm
Efficacy(5000K Ra70)	160lm/W	
Correlated Color Temperature	5000K (4000K optional)	
Color Rendering Index	Ra70 (Ra80 optional)	
Beam Angle	L02404(30°) L02403(45°) L02402(60°) L02401(90°)	
UGR level	22	

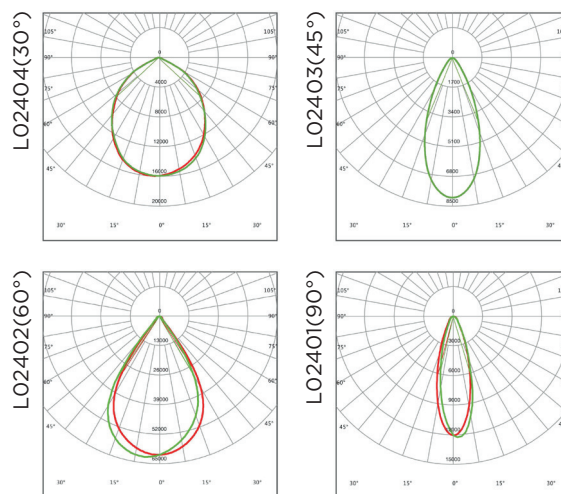
Dimensions and Mounting

Product Dimension	760x371x173mm	1164x371x173mm
Luminaire Net Weight	10.7±0.3kg	15.6±0.3kg
Mounting Option	Suspension Mounting, Ceiling Mounting	
Material	Housing:Aluminum Alloy, Optics:Poly-methyl methacrylate Optical Lens, Cover: Tempered Glass	
Finish	Sandblasting oxidation	
Fixture Color	Anodized Aluminum Color	
IK Rating	IK08	
IP Rating	IP66	

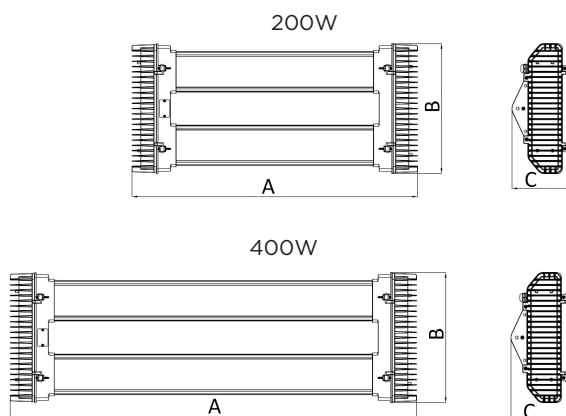
Lifespan and Warranty

Operating Temperature	-30°C to + 65°C
Lifetime of LED @Ta=25°C	126.000hrs-L80, 56.000hrs-L90
Warranty	5 Years (conditions at www.ett-lighting.com)

Photometry



Dimensions



Type	A (mm)	B (mm)	C (mm)
STARK-200/T	760	371	173
STARK-400/T	1164	371	173

Mounting Option

